

Fall 2003

Greenbelt Partners with Landowners on Habitat Restoration

The GLT, in partnership with The Nature Conservancy and the McKenzie River Land Trust in Eugene, was awarded nearly \$290,000 for prairie, oak woodlands, and riparian habitat restoration in the Willamette Valley. The grant award was the second highest in the nation for this new program administered by the United States Fish and Wildlife Service. The GLT will receive approximately \$34,000 of the total award for habitat restoration on four properties around Corvallis and Philomath.

Through the Private Stewardship Grants Program (PSGP), the USFWS offers financial assistance to individuals and groups to support voluntary conservation efforts on private lands for the benefit of threatened, endangered and other at-risk species. It is imperative that private landowners become involved in conservation because, according to a 1993 study by the Association for Biodiversity Information and The Nature Conservancy, "Half of the species listed as endangered or threatened have 80 percent or more of their habitat on private lands." Private lands conservation work is also critical in the Willamette Valley where over 90% of the lands are privately owned.

The individual federally listed species that will benefit from GLT efforts in the local area include four plant species and one invertebrate: Nelson's checkermallow (*Sidalcea nelsoniana*), Bradshaw's lomatium (*Lomatium bradshawii*), Kincaid's lupine (*Lupinus sulphureus ssp. kincaidii*), Willamette daisy (*Erigeron decumbens ssp. decumbens*), and Fender's blue butterfly (*Icaricia icarioides fenderi*).

The Greenbelt Land Trust's portion of the grant will target threatened and endangered species at four different sites in Corvallis

and Philomath. The reason these particular properties were chosen for this grant are three-fold. First, we selected properties which contain the species of concern or habitats that could be enhanced or restored to benefit the species. Second, these properties had landowners excited about the possibility of improving habitats for listed species. Finally, these properties are part of



GLT volunteer at Fitton Green

a larger effort to conserve remnants of Willamette Valley habitats found at the time of EuroAmerican settlement around 1850's.

As part of our Stewardship Program the GLT is working with interested landowners and other non-profits to identify and target specific habitats types that are declining within the Willamette Valley. A recently released publication, *The Willamette River Basin Planning Atlas* created

by the Pacific Northwest Ecosystem Research Consortium identifies these habitat types and provides information for the long-term conservation of them. These four private properties are good examples of these increasingly endangered Willamette Valley habitats.

Owens Farm

Using PSGP funds, the GLT is planning to manage the lower wetland areas of Owens Farm for Bradshaw's lomatium and Nelson's checkermallow, two threatened and endangered species. We will also focus on restoration of oak savanna and native wetland prairie, two increasingly threatened Willamette Valley habitats.

Bald Hill Farms

PSGP funds will be used to manage the site for the Willamette daisy and possibly Nelson's checkermallow. We will be focusing most of our restoration efforts along the southeast portion of the Bald Hill trail, which passes through this property. The primary components of this project include restoration of oak savanna and prairie through removal of invasive woody vegetation.

Philomath Properties

A 58-acre property will be managed for Kincaid's lupine and Fenders blue butterfly, two threatened and endangered species found on the upland prairie habitat of this property. This will be done primarily by reducing unwanted woody material, keeping invasive weedy vegetation under control, and by collecting lupine seed and having Philomath High School grow out seed to plant on site. The GLT is working with an advisory group of scientists to identify the priority management techniques to pursue.

The GLT holds a conservation easement
(continued)

Board of Directors

Cary Stephens
President

Betty Griffiths
Vice President

Mary Strickroth
Secretary

Jane Barth
Treasurer

John Bliss

Paul Doescher

Joe Kerkvliet

Jeff Mitchell

Barbara Mykrantz

John Nath

Cynthia Solie

Emeritus Members

Meg Campbell

Charles Ross

Steve McLaughlin

Staff

Karlene McCabe

Executive Director

karlene@greenbeltlandtrust.org

Claire Fiegner

Program Coordinator

Newsletter Editor/Designer

claire@greenbeltlandtrust.org

Ellie Larsen

Conservation Assistant

ellie@greenbeltlandtrust.org

Carol Chin

AmeriCorps Member

Volunteer Coordinator

carol@greenbeltlandtrust.org

The Greenbelt Land Trust acts to enhance community livability by protecting open space.

For more information, to volunteer, make a donation and/or receive the newsletter on a regular basis:

Write:

Greenbelt Land Trust

PO Box 1721

Corvallis, OR 97339

info@greenbeltlandtrust.org

Call: 541.752.9609

Or Go To:

www.greenbeltlandtrust.org



Cary Stephens, President

A Message From Our President

Exactly 10 months ago I wrote my first President's Report to you, the members. Looking back over the last 10 months, a lot has been accomplished. I would like to use this forum to also explain how the Greenbelt achieves success and how and where you might get involved.

Success starts with a mission that inspires action. The Greenbelt's mission is "to secure and protect in perpetuity open space that preserves natural beauty and provides a connection to the natural world for the residents of the Mid-Willamette region." We achieve our mission through the work of dedicated staff, board and volunteers. We invite our members to join us in carrying out the mission of the Greenbelt through our five program areas.

EDUCATION & OUTREACH: Through education and outreach efforts, the Greenbelt strives to increase community awareness about the value of protection and stewardship of open space and natural areas to individuals and the community as a whole.

OPEN SPACE PLANNING: The Greenbelt works with partners to acquire and protect critical open space and natural area properties. Since 1989, we have succeeded in conserving more than 1,500 acres of open space land. A major reason for this success is the careful planning and prioritization of properties that were a part of the drafting of the 1990 and 1998 Open Space Reports.

LAND PROTECTION PROGRAM: The Greenbelt, with the help of its partners, protects open space and natural areas in the Mid-Willamette region through land acquisition and conservation easements. The Greenbelt holds conservation easements on lands owned by the City of Corvallis, Benton County, and private individuals. Protection of these open space and natural area lands requires a creative, flexible program that utilizes multiple tools and partnerships.

STEWARDSHIP: The Greenbelt conducts stewardship activities, such as annual site monitoring, documentation and compliance of easements, and restoration of conservation easements and/or property that the Greenbelt owns. Restoration and monitoring of critical habitats have been possible through dedicated community members who volunteer their time.

TRAILS PROGRAM: The Greenbelt works with partner organizations to ensure connectivity and accessibility of open space parks for the community. This involves creating a network of trails through planning, easement acquisition, construction, and maintenance. Crews consisting mainly of volunteers have helped build the majority of trails in this community.

Whether you are interested in big picture ideas like open space planning or the hands on work of cutting trails or slinging gravel, your enthusiastic help is always appreciated. Contact the Greenbelt Land Trust office at 541-752-9609 or by email at *claire@greenbeltlandtrust.org* for more information and upcoming opportunities.

Cary B. Stephens

President

Owens Farm Restoration Phase One

Restoration work at Owens Farm is underway! Working in partnership with the U.S Fish and Wildlife, the GLT began work this past October. We began restoration by planting 15 acres of formerly cultivated fields in a native grass seed mix. The mixture was predominantly tufted hairgrass, with lesser amounts of American sloughgrass, manna grass, and meadow barley. Approximately 10 lbs were planted per acre for a total of 150 pounds of seed planted.

Oak habitat restoration work began the second week of October. Miller Tree Services was contracted to spend five days on the property clearing the undergrowth from the oak woodlands. They used a Timberjack, a tracked harvester suited for selective cutting and thinning. It is evident how the dense understory has affected the growth of the oak trees. The oaks at Owens Farm are not the typical "globe" oaks grown with unlimited space, with healthy limbs reaching to the ground. Rather the oaks released by the Timberjack are more vertical and vase-like. According to Steve Smith we cleared the competing species just in time. The GLT is very pleased with the work done by Miller Tree Services.

Thomas Owens, resident of the house at Owens Farm and descendent of the original land claim settlers, commented on the restoration work. "It looks great." As he wistfully looked out his window he commented on the time of the year. The view from his home is "so beautiful. It is so beautiful to look over to Jackson-Frazier Wetland and to the oak trees to the north and to see changing colors." ❖



Timberjack clearing understory

Open Space and Recreation Service Public Meetings Planned

The public is invited to provide input at two upcoming workshops planned through the City of Corvallis Parks and Recreation Department.

The City is in the process of developing a plan for Open Space Management focusing initially on the City's portion of the Owens Farm property just north of the City limits and west of Highway 99. The management plan will address appropriate uses of the land, maintenance, access and other related items.

Concurrently, a long-range plan for Recreation Services sponsored or co-sponsored by the City is being developed. The plan will look at programs and the facilities needed to conduct them as well as programs being provided by others in the community.

The meeting regarding Open Space will take place from 6:30 p.m. to 8 p.m. on Wednesday, November 12. The meeting focusing on the Recreation Services Plan will be from 6:30 p.m. to 8 p.m. on Wednesday, November 19. Both meetings will take place at the Stoneybrook Clubhouse off of Country Club Drive in southwest Corvallis.

For further information, please contact Dan Eden at 754-1703. ❖

The Greenbelt Invites you to

*Fall Harvest
at Owens Farm
November 15th
1-4 pm*

Tour recent restoration work in the oak woodlands and help collect downed wood to create wildlife habitat.

Snacks and hot cider will be provided.

For more info or to volunteer call the GLT office at 752-9609 or email Ellie at ellie@greenbeltlandtrust.org.

Support the Greenbelt Land Trust

Support the Greenbelt Land Trust

The Greenbelt Land Trust needs your help during this year's annual fall membership drive!

The Greenbelt Land Trust is celebrating its 14th year of protecting open space and natural area in our community. The work of preserving over 1,500 acres has been made possible by dedicated members such as yourself. Over the years the Greenbelt has expanded from a volunteer led organization focusing on creating a 'greenbelt' around the community of Corvallis and Philomath, to an official 501(c)3 non-profit organization led by a small staff and dedicated board and volunteers to fulfill our mission and five program areas (Land Conservation, Open Space Partnering, Public Education, Stewardship and Trails—see *A Message From Our President* for descriptions on page 2). This expansion and the fact that **over 95% of the original 'greenbelt' has been protected in perpetuity** is attributed to our members. Take pride and ownership in the work that has been accomplished so far because you helped make it possible!

Now is the time to share in our common values and to look to the future. Make a donation today to ensure our communities remain such wonderful places to live.

Following are ways you can make a difference:

MAKE A DONATION

Gifts can result in deductions from your federal income tax, and provide immediate resources for the Greenbelt Land Trust. If you are interested in donating with a credit card we ask you to donate through the Network for Good organization. It is now possible to make a charitable donation with the click of a mouse. Network for Good is a non-profit organization that will process and distribute your donation to the Greenbelt Land Trust with a 3% processing fee. If you are interested please visit www.networkforgood.org.

GIVE A GIFT MEMBERSHIP

Do you want to give a gift that makes a difference? Give a gift membership and

during the holidays the Greenbelt Land Trust will send a holiday gift card notifying your loved one

of your generous gift. GLT Board Member Barbara Mykrantz is planning to give a gift membership this year because the GLT represents something she is dedicated to and enjoys and would like to share that with a friend. She is planning to give this membership to a friend from a younger generation to encourage them to become involved and participate in organizations they value.

"I sleep better at night knowing I am a Greenbelt member."

JOIN THE MONTHLY DONOR PROGRAM

Make a monthly donation with Electronic Funds Transfer from your checking or savings account. Audrey Perkins-Hewes, a long time GLT member, has donated to the Greenbelt through our monthly donor program for the past three years. By participating through OSU Federal Credit Union, she is able to increase her membership donation to support open space conservation. Audrey sees this method of donating as a way to tax herself for causes she believes in and supports. "It's my own private bond measure that I don't have to wait to get voter approval for," stated Perkins-Hewes. She also points out that this method of donating is for renewing her membership, and that she supports special projects or fundraising campaigns with additional donations. With a busy lifestyle, Audrey Perkins-Hewes is always assured that her Greenbelt membership is current, "I sleep better at night knowing I am a Greenbelt member and knowing that I always make a contribution."

MAKE A SECURITIES DONATION

Securities, including stocks, bonds and mutual funds, can be a valuable gift and can provide an income tax deduction for the

Our Mission

The GREENBELT LAND TRUST works to secure and protect in perpetuity open space that preserves natural beauty and provides a connection to the natural world for the residents of the Mid-Willamette region.

full value of the securities. You also can benefit by avoiding capital gains taxes on highly appreciated securities.

PARTICIPATE IN A CHARITABLE GIVING CAMPAIGN AT YOUR WORKPLACE

Do you work at Hewlett Packard, CH2MHill, the City of Corvallis, OSU or other State and Federal employers, or First Alternative Coop? Then you can donate to the Greenbelt Land Trust through your workplace charitable giving campaign through Earth Share of Oregon. GLT member Ann Ossinger, an employee of Hewlett Packard, has participated in her workplace giving campaign and recommends this method of giving. She participates because, "it is a convenient way to give and enables me to make a larger donation by having \$5 dollars taken out of my monthly paycheck rather than making a one time gift." An additional benefit to Ann and her community is that her workplace matches their employees donations. (Please see article on page 7— *Contributing to ESOR at Your Workplace*)

DESIGNATE THE GLT AS A BENEFICIARY OF YOUR IRA

Retirement Plans offer an easy method to benefit the Greenbelt by making us a beneficiary of your IRA, 401(k) or other retirement plan. Such a gift avoids the income tax that is otherwise due on retirement plan funds. During their estate planning process, two dedicated land conservationists and GLT members Larry and Kathy Merriam, discussed that their goals for the future were to see to the needs of their children and grandchildren and to donate to organizations they support. Currently Larry is at the age where he can withdraw from their IRA account on a monthly basis, which they donate a portion to the GLT. Upon his demise the GLT will receive the remaining amount in the IRA account. ❖

Leaving Your Legacy

Thousands of Paper Bags Saved by Our Supporters!

Have you stopped by the First Alternative Co-op lately and noticed the Beans for Bags program? With each paper bag you save by bringing in your own, the Co-op will give you a bean representing the 5¢ you have saved. You can then take those beans and donate them to 4 different local non-profits. The Greenbelt is proud to be one of those 4 non-profits benefiting from this program.

For the first quarter of this program, the GLT was the top recipient of beans resulting in a donation of \$362.85. Our supporter saved a total of 7257 bags in just 3 months! Co-op patrons saved a total of 21,273 bags during the first 3 months of this Beans for Bags program. ❖

Keep up the good work!

Leave a Legacy that Lasts

Bequests can allow your dedication to land protection to continue into the future. By including the Greenbelt in your will or trust, your estate tax bracket will be lowered and you will be assured that your contribution will be used to its greatest advantage. This year the Greenbelt Land Trust received its first bequest from the estate of Cecelia Hornbrook. Mrs. Hornbrook was a dedicated member of the Greenbelt who attended many GLT picnics and hikes and loved to go bird watching around Corvallis. The donation from her bequest was designated for the Greenbelt Land Trusts endowment. ❖

The work of conservation is inspired by wonder, gratitude, reason and love. We need all of these emotions and faculties to do the work well. But the first impulse is love—love for wild and settled places, for animals and plants, for people living now and those yet to come, for the creations of human hands and minds.

- Scott Russell Sanders

An excerpt from "A Conservationist's Manifesto, 2003"

*Coming Soon!
A New and Improved
Greenbelt Land Trust
Web Site.*

*Look for our newly de-
signed web site by the
end of the year!*

Gift Membership—A Gift That Makes a Difference

Your Name _____ Address _____
Phone _____ would like to purchase a Greenbelt Land Trust Gift Membership for the person(s) named below:

1. Name: _____
Address: _____
City/State Zip: _____
Phone (optional): _____

2. Name: _____
Address: _____
City/State Zip: _____
Phone (optional): _____

3. Name: _____
Address: _____
City/State Zip: _____

Membership Levels

- | | | |
|--------------------------|-----------------|---------|
| <input type="checkbox"/> | General | \$25 |
| <input type="checkbox"/> | Supporting | \$100 |
| <input type="checkbox"/> | Guarantor | \$250 |
| <input type="checkbox"/> | Patron | \$500 |
| <input type="checkbox"/> | Millennium Club | \$1,000 |
| <input type="checkbox"/> | Additional Gift | |

GIVE A GIFT MEMBERSHIP
OVER THE HOLIDAYS AND THE GLT WILL
SEND A HOLIDAY CARD ANNOUNCING
YOUR GENEROUS GIFT!

MAIL TO: Greenbelt Land Trust PO Box 1721, Corvallis, OR 97339

Trails

Fitton Green Natural Area Hike

December 6th, 10 a.m.

Join the Greenbelt Land Trust in a hiking tour of the new trail that connects Bald Hill Park to Fitton Green Natural Area. We will be leading the hike on Saturday December 6th, departing from the Bald Hill Oak Creek parking lot at 10am.

The county has just installed trail signs and markers along the entire length of this trail connector. Help us celebrate this important trail by joining this Greenbelt Land Trust led hike.

The length of this hike is approximately 3.5 miles to Fitton Green Natural Area, approximately 7 miles round trip. If you would like to only hike to Fitton Green please arrange for someone to pick you up at the upper parking lot (at the end of Panorama Dr.). We will provide hot chocolate and snacks once we arrive at Fitton Green. ❖

New City Trails Map Published

The City of Corvallis has recently published a comprehensive guide to trails in Corvallis. This map highlights seven Corvallis parks including Avery Park, Bald Hill Park, Brandis Park, Chip Ross Park, Forest Dell Park, Walnut Park and Willamette Park.

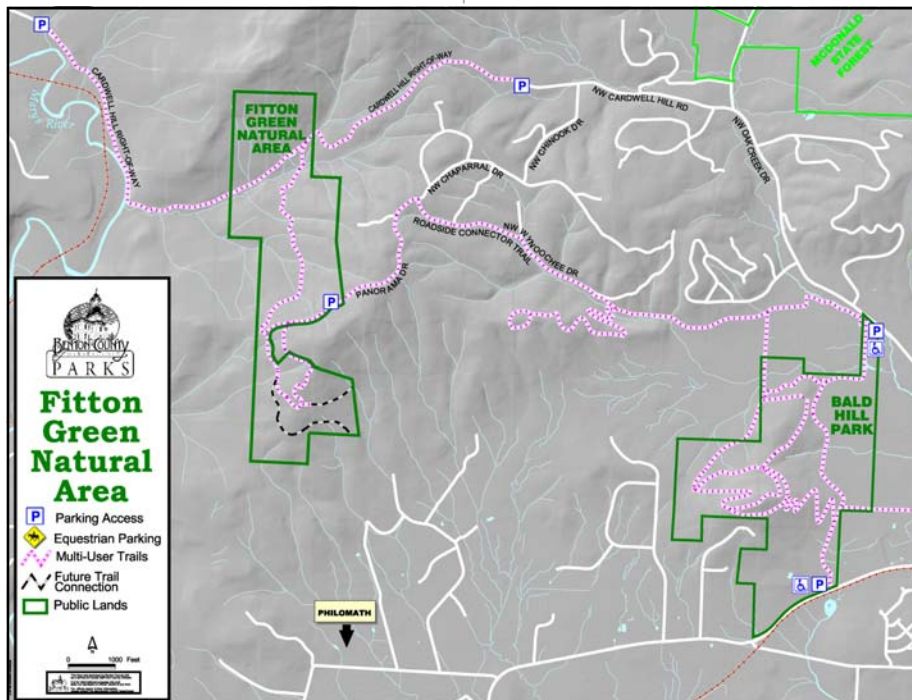
If you would like a copy of the *Guide to Trails in Corvallis* stop by the Corvallis Parks and Recreation office at 1310 SW Avery Park Dr., or visit their website www.ci.corvallis.or.us. ❖



Hiker at Chip Ross Park

Longevity Linked with Green Spaces

A Japanese study of more than 2,200 senior citizens has linked longevity with access to walkable green spaces such as parks and tree-lined streets. Living in areas with walkable green spaces positively influenced the longevity of urban senior citizens even after taking into consideration their age, sex, marital status, functional status and socioeconomic status, the researchers found. A positive attitude toward one's community also led to a longer life, according to "Urban Residential Environments and Senior Citizens' Longevity in Megacity Areas: The Importance of Walkable Green Spaces," which appeared in the *Journal of Epidemiology and Community Health* (jech.bmjournals.com/cgi/content/full/56/12/913). The researchers suggest that accessible greenery-filled public areas should be emphasized in urban planning. Health, construction, civil engineering, planning, and other sectors should collaborate in developing and implementing urban policy to promote the health of senior citizens, they said. *Reprinted with permission by Common Ground, a publication of The Conservation Fund* (www.conservationfund.org). ❖



This map is available from the Benton County Parks and Natural Areas office located at 360 SW Avery, or on their web site www.co.benton.or.us/parks/benton.htm.

Contribute to ESOR at Your Workplace: It's So Easy

For thousands of Oregonians, the advent of fall means the changing of the leaves—and the arrival of charitable fundraising campaigns in the workplace. With the help of donors in the workplace, Earth Share of Oregon's (ESOR's) 66 non-profit conservation organizations receive funds to protect human health, preserve wildlife habitat, and reduce the causes and effects of global warming.

The Greenbelt Land Trust is a proud member of ESOR. What does this mean to you? You and your fellow employees can choose to have contributions sent automatically to your favorite Oregon conservation groups, including the Greenbelt Land Trust. Since your contribution is spread out over the course of a year, the amount deducted from your paycheck is minimal, and all gifts are fully tax deductible. You can make a difference!

If your workplace is not currently involved in an ESOR giving program, establishing one is easy. ESOR will work with your employer to set up a program that meets your company's needs. Oregon's natural beauty and livability is legendary. With your contribution to ESOR, you can help ensure that it stays that way. For more information, please contact Ron Shoals at ESOR: (503) 223-9015 or rrs@earthshare-oregon.org; or visit www.earthshare-oregon.org. ❖

Remember these numbers!

Federal Campaign # 542I State Campaign # 0209

on page 7)

Habitat Restoration

(continued from page 1)

on the second property in the Philomath area. This 7-acre piece includes a population of Nelson's checkermallow. The restoration work completed under the PSGP will complement other wetland restoration work done on this site. The GLT plans to enhance the population of Nelson's checkermallow through reduction of weedy species that are competing with this threatened plant.

We will use these sites as examples of how landowners can work to improve rare habitat types to benefit threatened or endangered species. We will also offer volunteer opportunities to involve our members in on the ground restoration work. Upcoming activities include: seed collection, removal of downed wood, and reduction of unwanted woody material. Please watch the newsletter for upcoming work days on these properties. Help the GLT stretch our grant dollars while improving habitat

YES! I WANT TO SUPPORT THE GREENBELT LAND TRUST
with the following tax-deductible contribution.

Membership Form

- General \$25
- Supporting \$100
- Guarantor \$250
- Patron \$500
- Millennium Club \$1,000
- Additional Gift

I am enclosing a check for
\$ _____
for membership
in the Greenbelt Land Trust.

- New Member Renewal

Name		
Address		
City	State	Zip
E-mail		
Telephone	Date	

MAIL TO: Greenbelt Land Trust PO Box 1721, Corvallis, OR 97339

Volunteer Opportunities

I am interested in participating with the following committees:

- Education/Public Relations
- Finance/Fundraising
- Trails
- Geographic

More Information

- Please contact me about an educational presentation to my group or organization.
- Send me information about the tax benefits of land gifts and conservation easements.
- Send me information about including the Greenbelt in my trust or will.

Send in
your
membership
donation
TODAY!



Earth Share
OF OREGON



Calendar of Events

November

12th (Wednesday) —City of Corvallis Open Space mtg 6:30 p.m. - 8 p.m., Stoneybrook Clubhouse (*see page 3 for info.*)

15th (Saturday) —Owens Farm Fall Harvest Tour and Workday 1 p.m. - 4 p.m., Owens Farm (*see page 3 for info.*)

19th (Wednesday) —City of Corvallis Recreation Services Plan mtg 6:30 p.m. - 8 p.m., Stoneybrook Clubhouse (*see page 3 for info.*)

December

6th (Saturday) —Hike and Tour from Bald Hill Park to Fitton Green

Are you interested in being notified of upcoming trail and restoration workdays?

Call Claire at the GLT office at 541-752-9609 or send an email to claire@greenbeltlandtrust.org.



Look in the mail for your invitation to the GLT's Holiday gathering!



Fall 2003 P.O. Box 1721, Corvallis, OR 97339

RETURN SERVICE REQUESTED

NON-PROFIT
ORG.
U.S. POSTAGE
PAID
CORVALLIS, OR
PERMIT NO. 217

In this Issue...

- Habitat Restoration
- Owens Farm Restoration
- Open Space & Rec. Public Mgt.
- Support the GLT
- Trails

